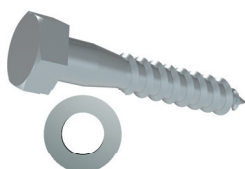


DWD 12 Double-wall dowels

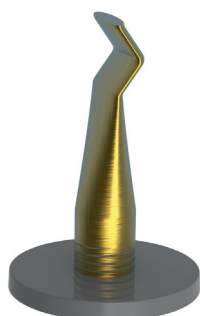
- Plastic dowel for fastening cross-arm braces.
- Particularly suitable for double walls.
- Also available with protective paper or adhesive plate.
- Matching with hexagon head wood screw DIN 571 12x70, made of zinc-coated steel with shim M12, zinc coated as of ISO 7089.



matching with screw DIN 571 12x70

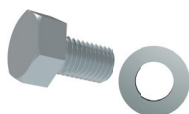
| article no. | designation | for screw | pcs. / sac |
|-------------|-------------|---------------|------------|
| 31012 | DWD 12 | DIN 571 12x70 | 250 |

Test certificate upon request.



SHS Fixing socket - system

- Galvanized, mounted.
- Capable for permanent fixation.
- CE-marking and confirmed as of DIN EN 1090.
- Not weakened by high temperatures.
- Should be used with matching hexagon head screws M12x25 & M16x25 DIN-EN-ISO 4017 and suiting shims.



matching with screw M12x25 & M16x25

| article no. | designation | thread M | pcs. / bag |
|-------------|-------------|----------|------------|
| 9345121 | SHS 12 | 12 | 100 |
| 9345161 | SHS 16 | 16 | 100 |

Pull-out values (in kN) for concrete quality C20/25:

| M12 | straight pull | 6,4 |
|-----|-------------------|-----|
| | diagonal pull 30° | 4,8 |
| | diagonal pull 40° | 3,5 |
| | transverse pull | 2,2 |

| M16 | straight pull | 10,4 |
|-----|-------------------|------|
| | diagonal pull 30° | 8,0 |
| | diagonal pull 40° | 7,2 |
| | transverse pull | 5,0 |



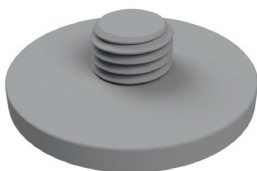


SHM Fixing socket

- Metrical thread, matching for KTG & HPG.
- For the fixation of pillars.
- CE-marking and confirmed as of DIN EN 1090.

| article no. | designation | thread M | screw-in length (mm) | pcs. / bag |
|-------------|-------------|----------|----------------------|------------|
| 934512 | SHM 12 | 12 | 28 | 500 |
| 934516 | SHM 16 | 16 | 20 | 250 |

Test certificate upon request.



KTG Threaded glueing plate

- Retaining element of plastic for fixing threaded sleeves.
- Glued to the formwork.

| article no. | designation | thread M | Ø (mm) | hight (mm) | pcs. / bag |
|-------------|-------------|----------|--------|------------|------------|
| 345121 | KTG 12 | 12 | 49 | 5 | 500 |
| 345161 | KTG 16 | 16 | 49 | 5 | 500 |

